

Badgeo Dual FIDO2 + OTP

FIDO2 + OTP and DESFire EV2/EV3 dual smart card Passwordless

Strong authentication for the web / cloud and applications



CYBERSECURITY
MADE IN EUROPE



fido
CERTIFIED

Badgeo Dual FIDO2 + OTP includes:

- ✓ ISO 7816 contact and contactless / NFC interface
- ✓ Smart card certified Common Criteria EAL6+
- ✓ FIDO2 (CTAP 2.1) + FIDO U2F applications, certified FIDO L1
- ✓ OTP applications (HOTP / TOTP)
- ✓ DESFire EV2/EV3 interface
- ✓ Contactless / NFC interfaces: ISO 15693 and 125 KHz

FIDO2 + OTP products are compatible with the majority of deployed business applications.



Supported operating systems and browsers

- Windows, Android, iOS, Chrome, Edge, Firefox, Safari
- For FIDO, no software installation on the client workstation
- For OTP, use of the application **NEOWAVE OTP Manager** required



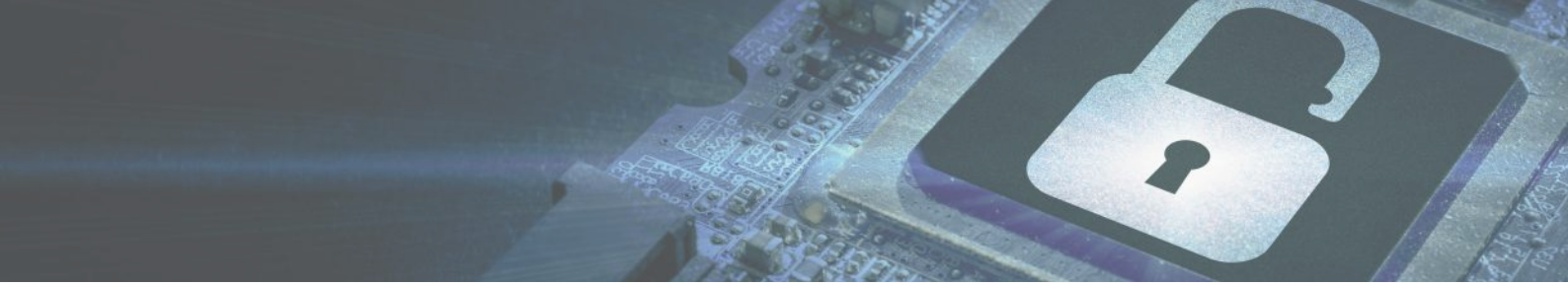
Smart card

- Java Card™
- CC EAL6+
- DES/3DES, AES, ECC, RSA
- Credential generation, management and storage inside the smart card



Wide compatibility

- Windows 10/11 with Microsoft Entra ID and over 250 online services such as Gmail, Paypal, OVH, WordPress, Dropbox
- Identity federations such as Evidian, Ilex, Okta, Ping Identity



Badgeo Dual FIDO2 + OTP is a dual-interface smart card (contact and contactless/NFC) compatible with FIDO2 (CTAP 2.1) and OTP (HOTP/TOTP) standards. It enables strong and simplified authentication on the web and in the cloud. It offers all professionals easy-to-deploy security solutions in mobile and desktop environments.

- ✓ Easy to use and deploy (HID and PC/SC device: no driver installation required for FIDO)
- ✓ To use the OTP function, you need to download the **NEOWAVE OTP Manager** application
- ✓ Credential generation, management and storage inside the smart card
- ✓ Complete separation between FIDO2 and OTP applications
- ✓ Anti-Phishing protection (to replace vulnerable SMS solutions)
- ✓ No “key wrapping” / No shared key preinstalled
- ✓ Graphic customization

Interface(s)

- Contact: ISO 7816
- Contactless / NFC: MIFARE, DESFire EV2/EV3,
- Contactless / NFC options: ISO 15693 and 125 KHz

Smart card

- Certified Criteria Common EAL6+

Supported Operating Systems

- Windows, Android, iOS

Browsers

- Chrome, Edge, Firefox, Safari

FIDO2.1 features

- credProtect
- hmac-secret
- Resident keys (rk) - Detectable credential
 - Maximum number limited by an available persistent memory (200 to 512 bytes per credential)
- User PIN, PIN 1 and PIN 2 protocols
 - PIN length between 4 Unicode characters and 63 bytes
 - PIN try limit set to 8. After 8 unsuccessful tries, the authenticator must be reset.
 - No default value
 - Management of specific PIN policies

Customization options:

- credBlob
- largeBlobKey
- minPinLength
- pinUvAuthToken
- noMcGaPermissionsWithClientPin
- setMinPINLength
- ep - Enterprise Attestation
- authnrCfg
- credMgmt
- largeBlobs
- makeCredUvNotRqd
- alwaysUv

Supported signature-algorithm

- ECC P-256 (secp256r1)

OTP application features

- TOTP: 30 or 60 seconds
- HOTP: configurable initial counter
- Common features:
 - 6 to 8 digits
 - SHA 1, 256, 512

Dimensions and weights

- Size: length 85.6 mm / width 54 mm / height 0.76 mm
- Weight: 5 g



About FIDO (Fast IDentity Online)

The FIDO Alliance, bringing together major players such as Google, Microsoft and Apple, encourages the adoption of FIDO2 for passwordless authentication using passkeys based on cryptographic keys, as well as FIDO U2F for enhanced second factor authentication. Devices such as Winkeo keys and Badgeo cards contribute to increased protection against phishing cyberattacks.

About NEOWAVE

NEOWAVE specializes in strong authentication and secure transactions. NEOWAVE's products combine the high level of security provided by smart cards with the advantages of storage and connectivity technologies: USB, RFID / NFC and Bluetooth Low Energy (BLE). NEOWAVE products and services address the cybersecurity, digital trust and identity management markets.